



Ding! your next big idea in learning design is here.

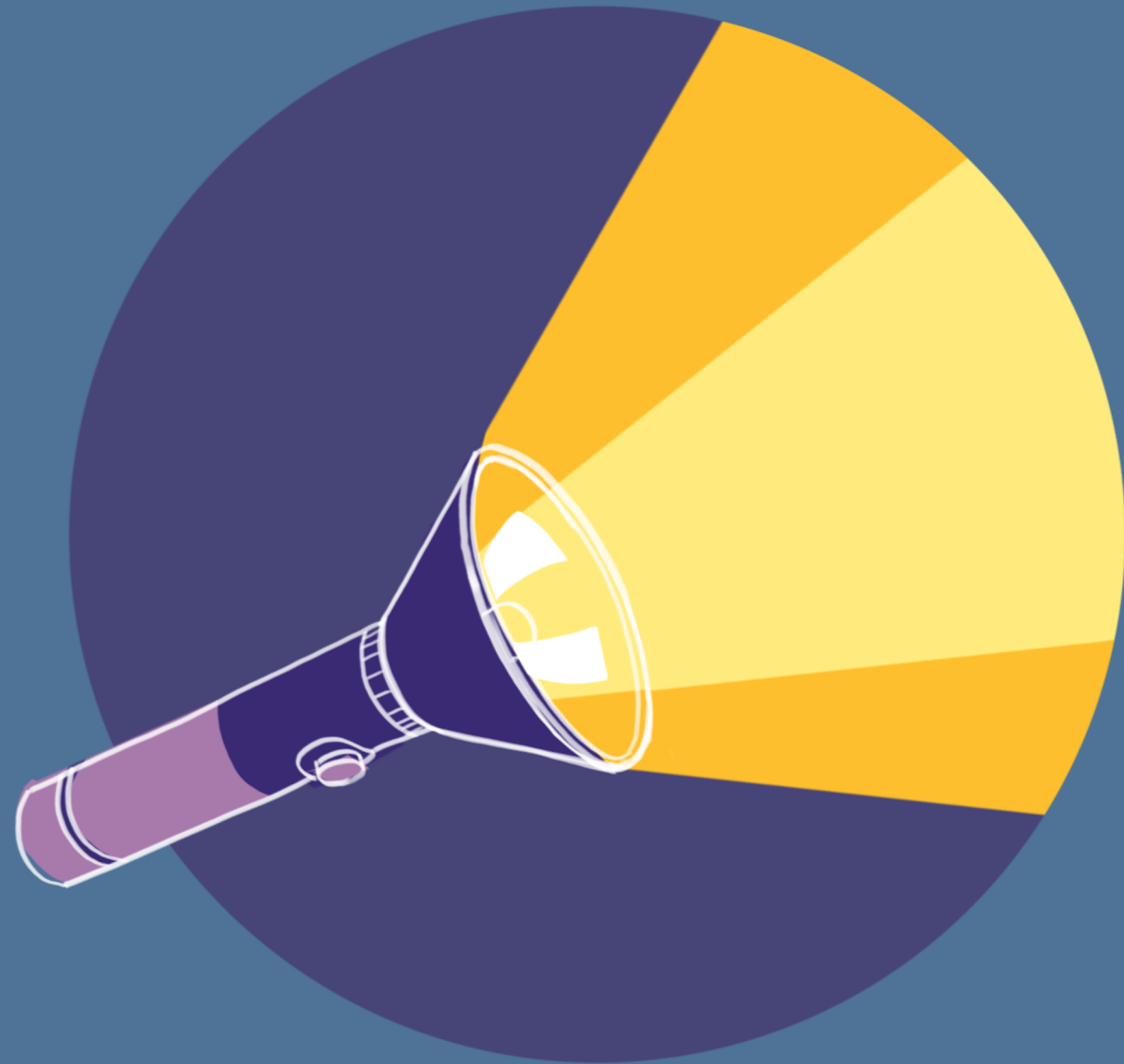
Thank you for inviting us to evaluate your course!

We greatly enjoyed meeting you all and listening to your thoughts and ideas.

Having looked at all aspects of your course, here are our findings:

What we heard

- You need to refocus your course learning outcomes to respond to your students' changing needs
- Your tutors have many complementary skills, but these are not being used effectively at the moment
- You have a valuable opportunity to create a course learning environment that will make your course more distinctive.
- Your team are struggling to adapt to an increasingly blended environment
- There is a legacy culture on the course that is holding back change and preventing the course from evolving



What we think

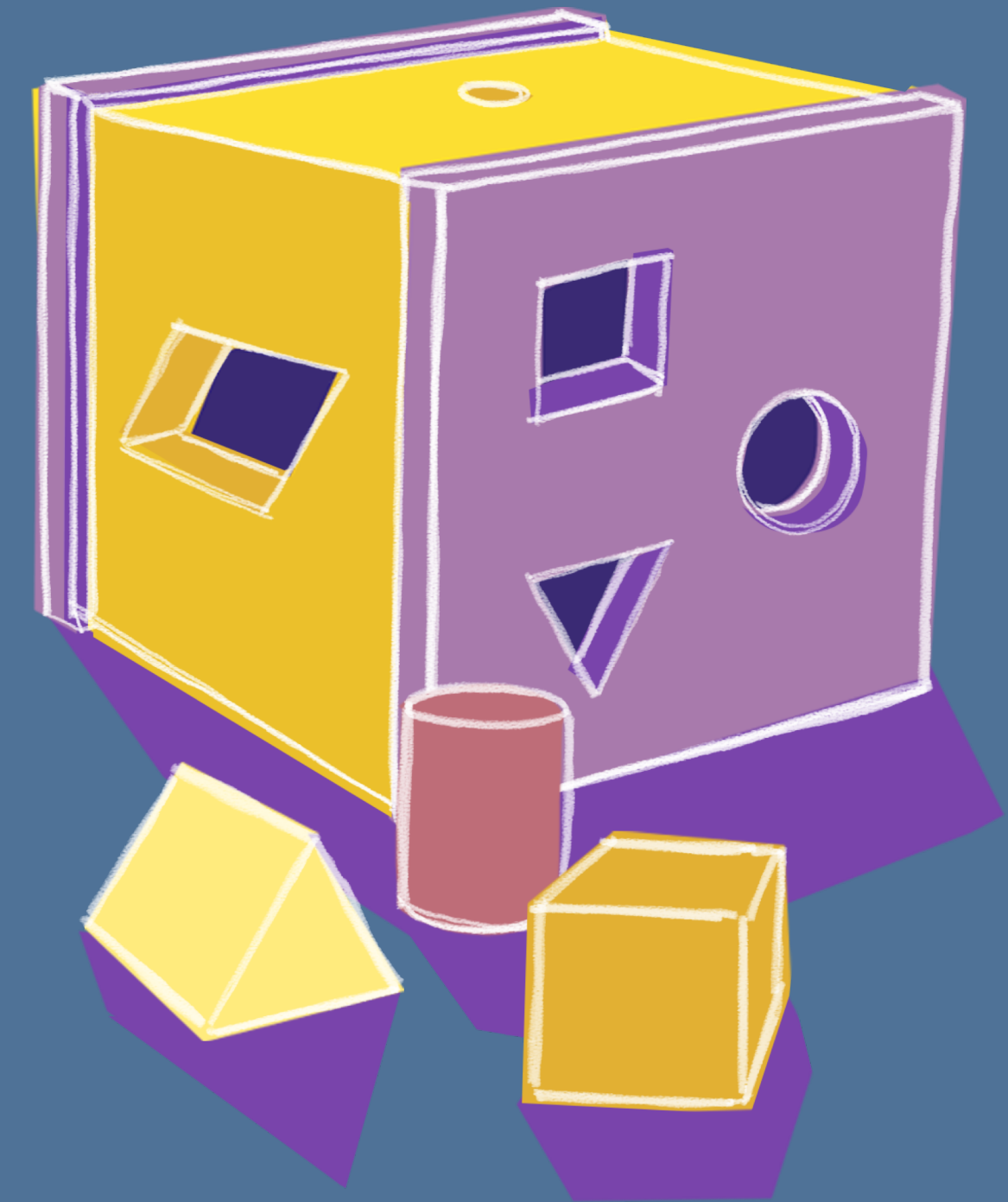


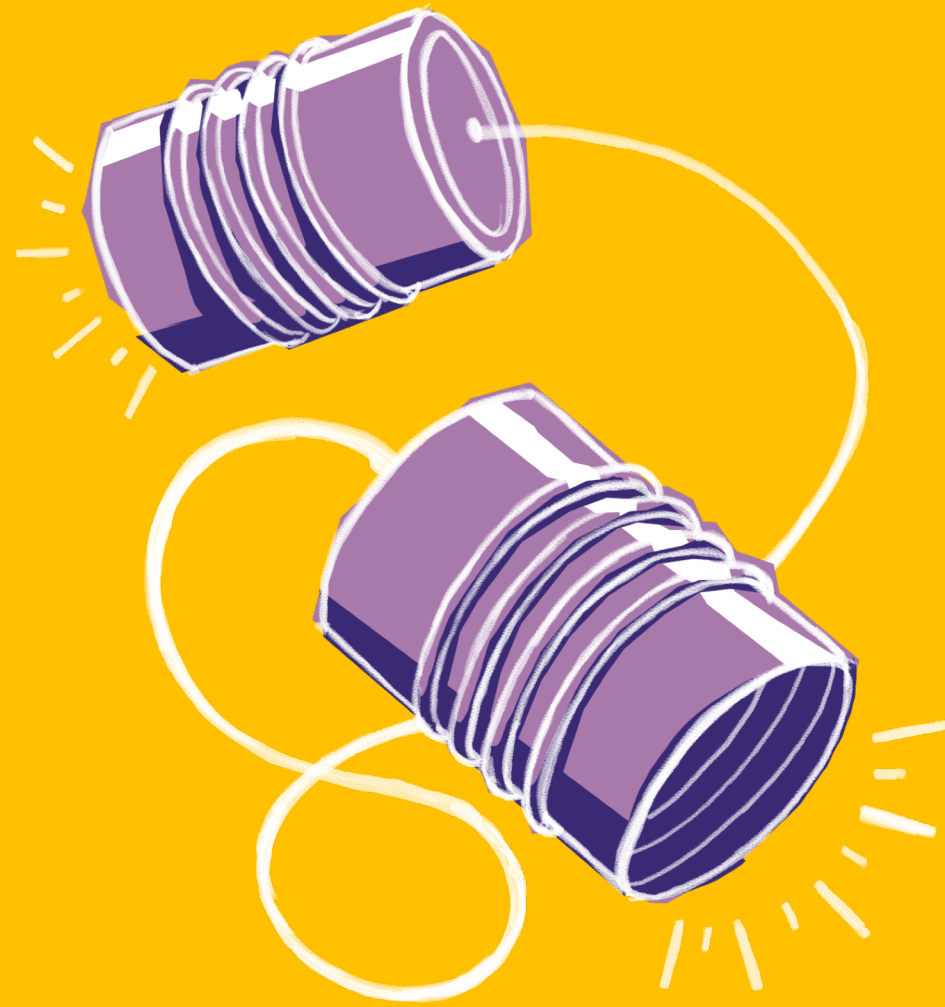
1. The first year experience is currently very content heavy. This may be preventing students from developing the independent learning skills they will require in stages 2 and 3.
2. Your second year learning outcomes are not providing sufficient preparation for progression into stage 3.
3. There are currently a lot of summative assessment points, and this is creating significant workload for your course team.
4. Your course team require support with learning technology to help them create an effective blend of on campus, online and asynchronous learning.
5. The course culture of stages 1, 2 and 3 has become disconnected. This could be addressed by focusing on developing a greater sense of course community.



Our recommendations

1. Consider removing content from your first year and replacing it with opportunities for students to learn about learning.
2. Consider simplifying and refocusing your second year learning outcomes on helping your students prepare for their final year.
3. Explore using more formative assessment points to shift the emphasis more towards assessment for learning.
4. Provide workshops and 1-2-1 technology support for your course team to help them develop their confidence in providing blended learning.
5. Consider refocusing your first year learning outcomes on collaboration to help students - and tutors - develop a sense of community. This will create a more supportive learning environment which will in turn drive engagement and retention.





let's talk again soon!

